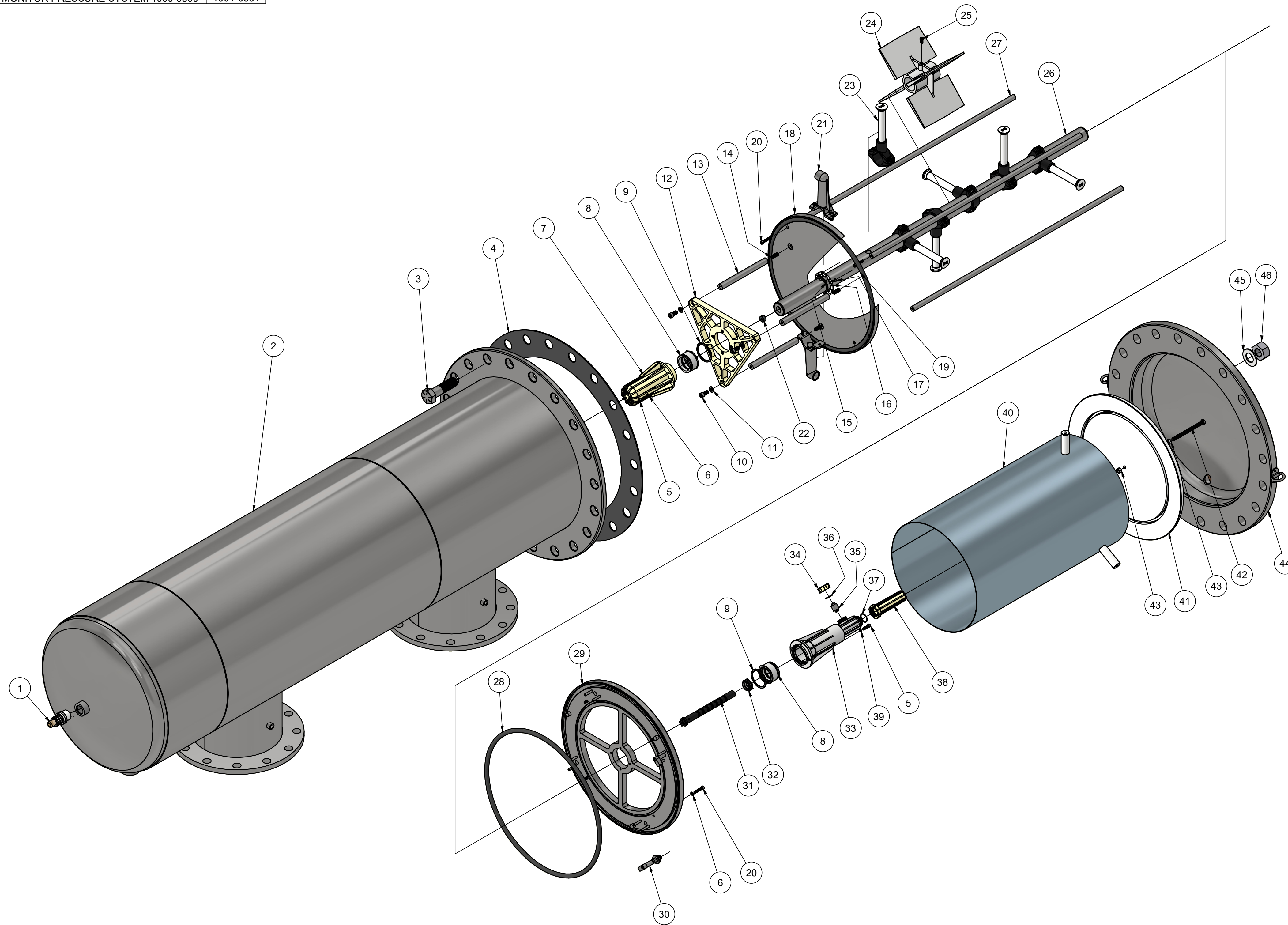


COMPLETE INTERNAL	1001-0600
COMPLETE INTERNAL VITON	1002-6028
ELEMENT, V2000 XXX MICRON	VARIES
KIT BASIC PARTS-V2000	1002-0278
KIT BASIC PARTS-V2000 VITON	1002-2958
MONITOR PRESSURE SYSTEM 1000-3500	1001-6881

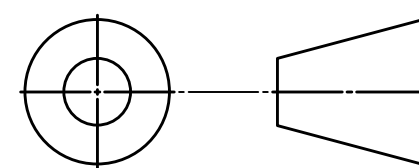


46	20	1001-0490	NUT, HEX 1-1/8IN ZINC PLATED 2000;
45	20	1001-0482	WASHER, FLAT 1-1/8 X 2.25 IN ZINC;
44	1	1001-0410	LID, 316SS 2000 1" PORT
		1002-1899	LID, 316SS 2000 DOUBLE 1" PORTS
43	2	1000-0027	NUT, 3/8" 316SS HEX
42	1	1001-8892	SCREW, SHC 3/8-16 X 5" 316SS FULL THD;
41	1	1001-0550	CAP, PRESTRAINER 2000-3500
40	1	1001-0443	PRESTRAINER, ASSY 316SS 2000
39	4	1001-0521	WASHER, SPRING LOCK 1/4IN;
38	1	1001-0962	COVER, REVERSER 1000-2000
37	1	1001-0961	O-RING, EPDM-70 -022
		1000-1188	O-RING, REVERSER COVER VITON;
36	1	1001-0752	O-RING, EPDM-70 -018
		1000-1187	O-RING, PAWL RETAINER VITON;
35	1	1001-0764	PAWL, REVERSER 250-2000
34	1	1001-0956	CAP, PAWL RETAINER 250-2000 0915
33	1	1002-4161	HOUSING, REVERSER 1000-2000 NO INSERT;
32	1	1001-0920	NUT, REVERSER/SCANNER 1000-2000 316SS
31	1	1002-1258	REVERSER, SHAFT 1000-2000 0620;
30	4	1001-0535	CLAMP, BULKHEAD ASSY 316SS 2000
29	1	1001-1053	BULKHEAD, UPPER 316SS 2000 MACHINED
28	1	1001-0496	O-RING, UPPER BULKHEAD 2000
		1001-5875	O-RING, UPPER BULKHEAD V2000 VITON;
27	4	1001-1077	BAR, TIE 316SS 2000/2000-V
26	1	1001-7352	TUBE, DIRT COLLECTOR 1500/2000 W/MAGNET
25	1	1001-0863	SCREW, SHC 1/4-20 X 1/2IN 316SS
24	1	1001-0796	SPEED REDUCER, 1000-2000 2000-V
23	6	1001-8768	KIT, VAC NOZZLE, REPLACE 2000/2000-V
22	1	1001-6440	KIT, MAGNET ROTOR 250-2500; W/ADHESIVE
21	1	1001-0725	KIT, WATER MOTOR ASSY 1500-2000 2000-V;
20	8	1001-1068	SCREW, SHC 1/4-20 X 1-1/4IN 316SS;
19	1	1001-0497	O-RING, LOWER BULKHEAD 2000
		1001-5876	O-RING, LOWER BULKHEAD V2000 VITON;
18	1	1001-1029	BULKHEAD, LOWER 316SS 2000 MACHINED
17	3	1001-0053	SCREW, FHSC 8-32 X .5" 316 SS
16	1	1001-0051	RETAINER, SEAL WASHER 250-2000 2000-V;
15	1	1001-0049	SEAL, WASHER 1000-2000 2000-V
14	3	1001-0984	SCREW, SET CUPPOINT 3/8-16 X 1.25";
13	3	1001-0979	SPACER, STAND OFF 316SS 1000-2000
12	1	1001-0973	PLATE, MOUNT PLASTIC 1000-2000 MACHINED
11	3	1001-0746	WASHER, SPLIT LOCK LOCK 3/8IN 316SS
10	3	1001-0982	SCREW, SHC 3/8-16 X 3/4 316SS;
9	2	1001-0914	RING, RETAINING 2.473 OD 316 SS
8	2	1001-0933	BUSHING, ASSY 1000-2000 2000-V;
7	1	1001-1247	CYLINDER, MACHINED 1000-2000 2000-V
6	8	1001-0744	WASHER, LOCK 1/4 MED SPLIT;
5	8	1001-0743	SCREW, SHC 1/4-20 X 7/8 316SS;
4	1	1001-0509	GASKET, TANK SEAL GREEN 2000H;
3	20	1001-0474	BOLT, LID 1-1/8-7 X 4 ZINC PLATED;
2	1	1002-3490	REPLACEMENT, TANK, 316SS 2000-8
		1002-3491	REPLACEMENT, TANK, 316SS 2000-10
		1002-3146	REPLACEMENT, TANK, 316SS 2000-12
		1002-3492	REPLACEMENT, TANK, 316SS 2000-14
1	1	1001-1240	SENSOR, ASSY 250-2500 STD

4

STD:22x34_D v4.42 BAR = T AT PLOT SCALE

THIRD ANGLE PROJECTION



DRAWN PER ASME Y14.5M
UNLESS OTHERWISE SPECIFIED, ALL
WELD SYMBOL DIMENSIONS ARE
MINIMUM. ALL DIMENSIONS ARE INCHES,
DIMENSIONS IN (mm) ARE MILLIMETERS,
WEIGHTS ARE POUNDS, AND
TOLERANCES TO BE AS FOLLOWS:

FABRICATION	MACHINE
XX ± .06	XX ± .03
[X ± 2]	.XXX ± .005
< ± 2	[X ± 1]
	< ± 1

4	REDRAWN	26-11-2021	RVR	JPB	JPB	---
3	ITEM 33 P/N UPDATED	12-05-2023	RVR	JPB	JPB	---
REV	DESCRIPTION	DATE	DWN	CKD	APPD	ECN

FOR SCREEN OPTIONS, CONTACT VAF

COMPANY CONFIDENTIAL INFORMATION
THIS DOCUMENT AND ALL INFORMATION CONTAINED
HEREIN, INCLUDING THE DESIGN CONCEPTS AND THOSE
ARISING THEREFROM ARE THE PROPERTY OF VAF SCREEN
FILTERS AND/OR ITS AFFILIATES AND ARE SUBMITTED IN
CONFIDENCE. THEY MAY BE USED ONLY FOR THE EXPRESS
PURPOSE FOR WHICH THEY ARE PROVIDED AND MUST NOT
BE DISCLOSED, REPRODUCED OR COPIED IN ANY FORM,
INCLUDING IN ELECTRONIC FORMAT, LOANED OR USED IN
ANY OTHER MANNER WITHOUT THE EXPRESS WRITTEN
CONSENT OF VAF SCREEN FILTERS. ALL PATENT RIGHTS
ARE RESERVED. THIS DOCUMENT AND DERIVATIVE WORKS
THEREOF ARE PROTECTED UNDER APPLICABLE
COPYRIGHT LAWS. UPON DEMAND OF VAF SCREEN
FILTERS, THIS DOCUMENT, ALONG WITH ALL COPIES AND
EXTRACTS, AND ALL RELATED NOTES AND ANALYSES MUST
BE RETURNED TO VAF SCREEN FILTERS OR DESTROYED,
AS INSTRUCTED BY VAF SCREEN FILTERS. ACCEPTANCE
OF THE DELIVERY OF THIS DOCUMENT CONSTITUTES
AGREEMENT TO THESE TERMS.

DWN BY:	IAF	DATE	11-05-2020
CKD BY:	DATE		
APPD BY:	JPB	DATE	11-05-2020
MDG BY:	JPB	DATE	11-05-2024
	JPB	SCALE	NTS
	JPB	NTS	

TITLE: 2000-XX EXPLODED VIEW

CLIENT:

PROJ/PROD NUMBER: 2000-XX EV

CODE: FILE/DRAWING NUMBER

SHEET: 1 OF 1

REV: 4



VAF Screen Filters
5640 Logistics Dr #100, Alpharetta, GA 30004
Phone: 470-222-2890
Email: solutions@fsbrands.com