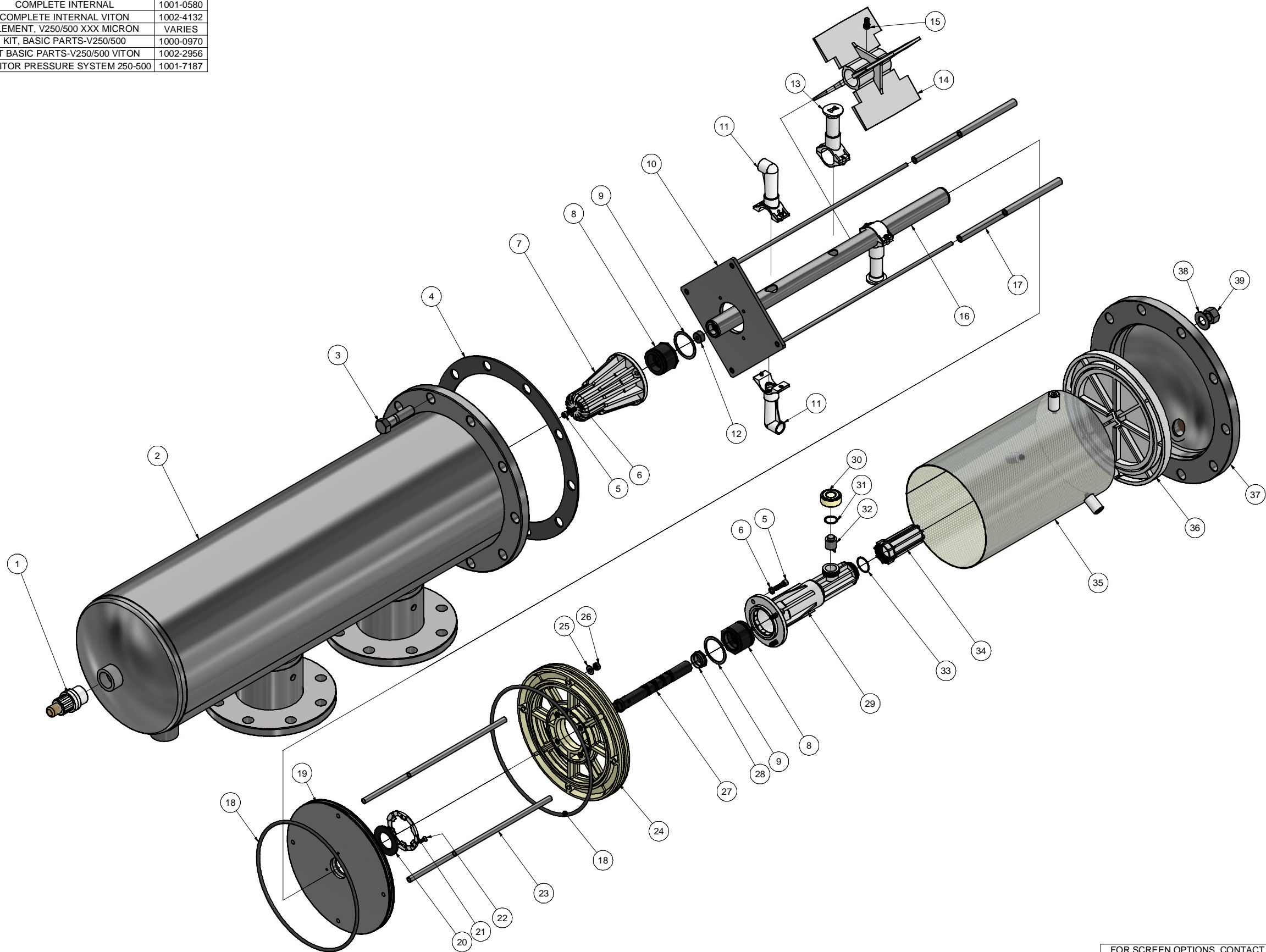


COMPLETE INTERNAL	1001-0580
COMPLETE INTERNAL VITON	1002-4132
ELEMENT, V250/500 XXX MICRON	VARIES
KIT, BASIC PARTS-V250/500	1000-0970
KIT BASIC PARTS-V250/500 VITON	1002-2956
MONITOR PRESSURE SYSTEM 250-500	1001-7187



39	10	1001-0484	NUT, HEX 5/8-11 ZINC PLATED
38	10	1001-0476	WASHER, FLAT 5/8IN SAE 1-5/16 OD ZINC PLT
37	1	1001-0401	LID, 316SS 250/500
		1000-1176	LID, 316SS 250/500 DUAL 1 IN PORT 150PSI
36	1	1001-0069	CAP, PRESTRAINER 250/500-MACHINED
35	1	1001-0430	PRESTRAINER, ASSY 316SS 250/500-04;
34	1	1001-0960	COVER, REVERSER 250/500
33	1	1001-0961	O-RING, EPDM-70 -022
		1000-1188	O-RING, REVERSER COVER VITON
32	1	1001-0764	PAWL, REVERSER 250-2000
31	1	1001-0752	O-RING, EPDM-70 -018
		1000-1187	O-RING, PAWL RETAINER VITON
30	1	1001-0956	CAP, PAWL RETAINER 250-2000 0915
29	1	1002-5878	HOUSING, REVERSER 250-500 NO INSERT
28	1	1001-0901	NUT, REVERSER/SCANNER V-250/500 316SS
27	1	1002-1257	REVERSER, SHAFT 250/500 0620
26	4	1001-0062	NUT, HEX 1/4-20 316SS
25	4	1001-0064	WASHER, 316SS 9/32 ID X 5/8OD;
24	1	1001-0067	BULKHEAD, UPPER 250/500 MACH
23	4	1001-0058	SPACER, LONG 316SS 250/500
22	3	1001-0053	SCREW, FHSC 8-32 X .5" 316 SS
21	1	1001-0051	RETAINER, SEAL WASHER 250-2000 2000-V;
20	1	1001-0047	SEAL, WASHER 250/500
19	1	1001-1013	BULKHEAD, LOWER 316 250/500 1/2" 2017+
18	2	1000-9983	O-RING, EPDM 70 -374
		1001-2243	O-RING, VITON
17	4	1001-0061	SPACER, SHORT 316SS 250/500 w/.5IN BKHD
16	1	1001-7323	TUBE, DIRT COLLECTOR 250 W/MAGMET
15	1	1001-0863	SCREW, SHC 1/4-20 X 1/2IN 316SS
14	1	1001-0778	SPEED REDUCER, 250/500
13	2	1001-0856	KIT, VAC NOZZLE REPLACE 250/500
12	1	1001-6440	KIT, MAGNET ROTOR 250-2500 W/ADHESIVE
11	1	1001-0714	KIT, WATER MOTOR ASSY V-250/500
10	1	1001-0970	FRAME, CARRIAGE 316SS 250
9	2	1001-0898	RING, RET SPIRAL 2.008 OD 316SS/PK=1
8	2	1001-0910	BUSHING, ASSY 250/500
7	1	1001-1243	CYLINDER, 250-500 MACHINED
6	8	1001-0744	WASHER, LOCK 1/4 MED SPLIT;
5	8	1001-0743	SCREW, SHC 1/4-20 X 7/8 316SS;
4	1	1001-0503	GASKET, TANK SEAL GREEN 250/500
3	10	1001-0468	BOLT, LID 5/8-11X2-1/2 ZINC PLATED;
2	1	1002-3469	REPLACEMENT TANK V250-04
		1002-3462	REPLACEMENT TANK V250-03
1	1	1001-1240	SENSOR, ASSY 250-2500 STD

THIRD ANGLE PROJECTION

ALL WELD SYMBOL DIMENSIONS ARE MINIMUM. DIMENSIONS IN [mm] ARE MILLIMETERS. DO NOT SCALE DRAWING

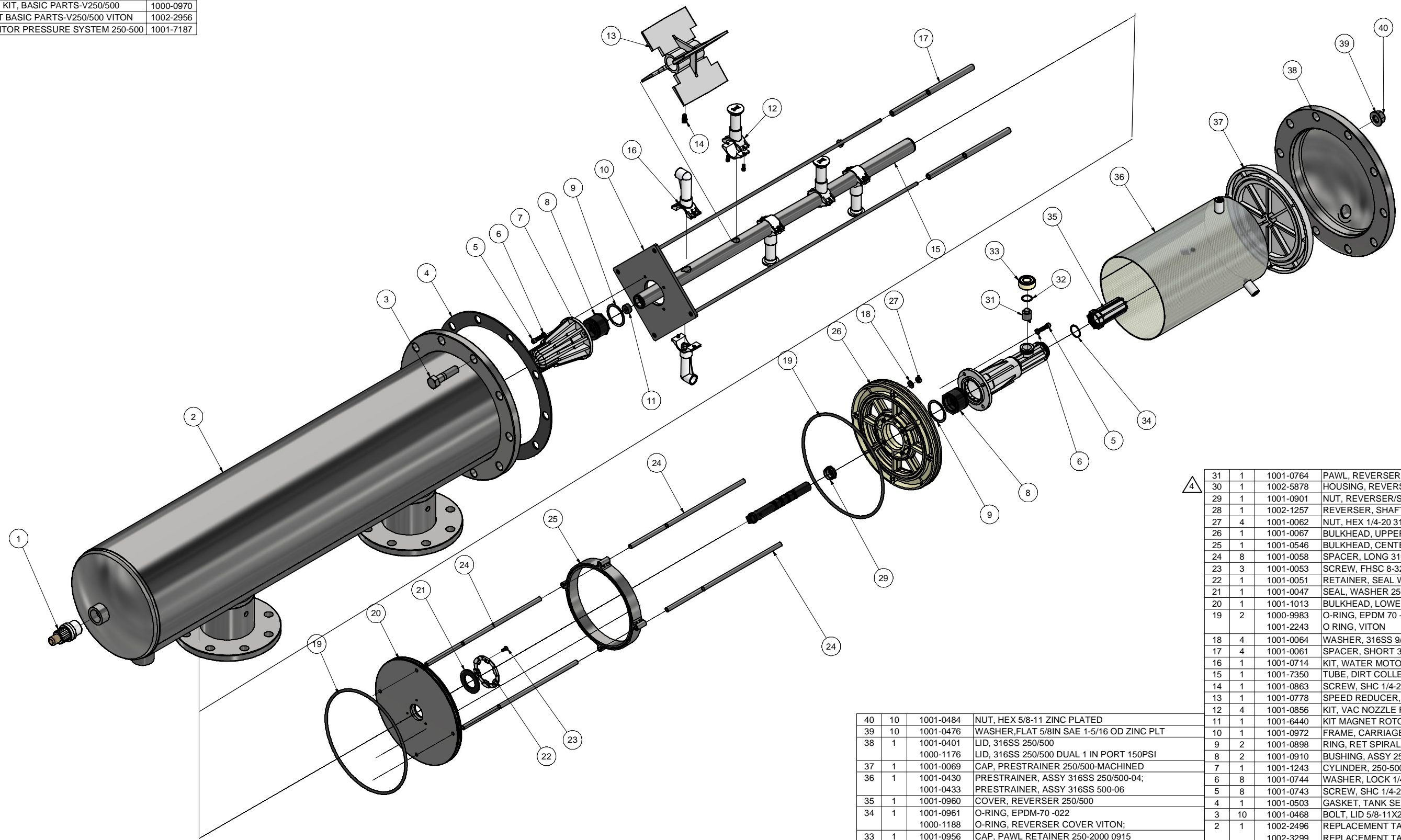
DRAWN PER ASME Y14.5M UNLESS OTHERWISE SPECIFIED ALL DIMENSIONS ARE INCHES AND TOLERANCES TO BE AS FOLLOWS.

FABRICATION	MACHINE
.XX +/- .06	.XX +/- .03
[X +/- 2]	.XXX +/- .005
< +/- 2	[X +/- 1]
	[.X +/- .1]
	< +/- 1

COMPANY CONFIDENTIAL	
DOCUMENT AND ALL INFORMATION CONTAINED HEREIN ARE THE PROPERTY OF EVOQUA AND/OR ITS AFFILIATES. THE DESIGN CONCEPTS AND INFORMATION CONTAINED HEREIN ARE PROPRIETARY TO EVOQUA AND ARE SUBMITTED IN CONFIDENCE. THEY ARE NOT TRANSFERABLE AND MUST BE USED ONLY FOR THE PURPOSE FOR WHICH THE DOCUMENT IS EXPRESSLY LOANED. THEY MUST NOT BE DISCLOSED, REPRODUCED, LOANED OR USED IN ANY OTHER MANNER WITHOUT THE EXPRESS WRITTEN CONSENT OF EVOQUA. IN NO EVENT SHALL THEY BE USED IN ANY MANNER DETRIMENTAL TO THE INTEREST OF EVOQUA. ALL PATENT RIGHTS ARE RESERVED. UPON THE DEMAND OF EVOQUA, THIS DOCUMENT, ALONG WITH ALL COPIES AND EXTRACTS, AND ALL RELATED NOTES AND ANALYSES, MUST BE RETURNED TO EVOQUA OR DESTROYED, AS INSTRUCTED BY EVOQUA. ACCEPTANCE OF THE DELIVERY OF THIS DOCUMENT CONSTITUTES AGREEMENT TO THESE TERMS.	
DESIGNER	YUV
DATE	2021-04-25
CHECKER	JPB
DATE	2021-04-25
ENGINEER	JPB
DATE	2021-04-25
MANAGER	JPB
DATE	2021-04-25
FILE:	
SCALE:	NONE

FOR SCREEN OPTIONS, CONTACT VAF							
ITEM	QTY	PART NUMBER	DESCRIPTION				
TITLE: V-250-XX EXPLODED VIEW							
CLIENT							
VAF Screen Filters 5640 Logistics Dr #100, Alpharetta, GA 30004 Phone: 470-222-2890 Email: solutions@fisbrands.com							
PROJECT	PART NUMBER	DRAWING	SHEET				
		V-250-XX EV	1 OF 1				
REV	DESCRIPTION	DATE	DWN	CHKD	APVD	ECN	REV
4	ITEM 29 P/N UPDATED	2023-05-12	RVR	JPB	JPB	---	---
3	REDRAWN	2021-11-11	RVR	JPB	JPB	---	---

COMPLETE INTERNAL	1001-0584
COMPLETE INTERNAL VITON	1002-3461
ELEMENT, V250/500 XXX MICRON	VARIES
KIT, BASIC PARTS-V250/500	1000-0970
KIT BASIC PARTS-V250/500 VITON	1002-2956
MONITOR PRESSURE SYSTEM 250-500	1001-7187



ITEM	QTY	PART NUMBER	DESCRIPTION
31	1	1001-0764	PAWL, REVERSER 250-2000
30	1	1002-5878	HOUSING, REVERSER 250-500 NO INSERT
29	1	1001-0901	NUT, REVERSER/SCANNER V-250/500 316SS
28	1	1002-1257	REVERSER, SHAFT 250/500 0620
27	4	1001-0062	NUT, HEX 1/4-20 316SS
26	1	1001-0067	BULKHEAD, UPPER 250/500 MACH
25	1	1001-0546	BULKHEAD, CENTER 500
24	8	1001-0058	SPACER, LONG 316SS 250/500
23	3	1001-0053	SCREW, FHSC 8-32 X .5" 316 SS
22	1	1001-0051	RETAINER, SEAL WASHER 250-2000 2000-V;
21	1	1001-0047	SEAL, WASHER 250/500
20	1	1001-1013	BULKHEAD, LOWER 316 250/500 1/2" 2017+
19	2	1000-9983	O-RING, EPDM 70 -374
		1001-2243	O RING, VITON
18	4	1001-0064	WASHER, 316SS 9/32 ID X 5/8OD;
17	4	1001-0061	SPACER, SHORT 316SS 250/500 w/.5IN BKHD
16	1	1001-0714	KIT, WATER MOTOR ASSY V-250/500
15	1	1001-7350	TUBE, DIRT COLLECTOR 500 W/MAGNET
14	1	1001-0863	SCREW, SHC 1/4-20 X 1/2IN 316SS
13	1	1001-0778	SPEED REDUCER, 250/500
12	4	1001-0856	KIT, VAC NOZZLE REPLACE 250/500
11	1	1001-6440	KIT MAGNET ROTOR ASSY 250-2500; W/ADHESIVE
10	1	1001-0972	FRAME, CARRIAGE 316SS 500
9	2	1001-0898	RING, RET SPIRAL 2.008 OD 316SS/PK=1
8	2	1001-0910	BUSHING, ASSY 250/500
7	1	1001-1243	CYLINDER, 250-500 MACHINED
6	8	1001-0744	WASHER, LOCK 1/4 MED SPLIT;
5	8	1001-0743	SCREW, SHC 1/4-20 X 7/8 316SS;
4	1	1001-0503	GASKET, TANK SEAL GREEN 250/500
3	10	1001-0468	BOLT, LID 5/8-11X2-1/2 ZINC PLATED;
2	1	1002-2496	REPLACEMENT TANK V500-04-F 150PSI
		1002-3299	REPLACEMENT TANK V500-06-F 150PSI
1	1	1001-1240	SENSOR, ASSY 250-2500 STD

ITEM	QTY	PART NUMBER	DESCRIPTION
40	10	1001-0484	NUT, HEX 5/8-11 ZINC PLATED
39	10	1001-0476	WASHER, FLAT 5/8IN SAE 1-5/16 OD ZINC PLT
38	1	1001-0401	LID, 316SS 250/500
		1000-1176	LID, 316SS 250/500 DUAL 1 IN PORT 150PSI
37	1	1001-0069	CAP, PRESTRAINER 250/500-MACHINED
36	1	1001-0430	PRESTRAINER, ASSY 316SS 250/500-04;
		1001-0433	PRESTRAINER, ASSY 316SS 500-06
35	1	1001-0960	COVER, REVERSER 250/500
34	1	1001-0961	O-RING, EPDM-70 -022
		1000-1188	O-RING, REVERSER COVER VITON;
33	1	1001-0956	CAP, PAWL RETAINER 250-2000 0915
32	1	1001-0752	O-RING, EPDM-70 -018
		1000-1187	O-RING, PAWL RETAINER VITON

FOR SCREEN OPTIONS, CONTACT VAF

THIRD ANGLE PROJECTION  
  
 ALL WELD SYMBOL DIMENSIONS ARE MINIMUM. DIMENSIONS IN [mm] ARE MILLIMETERS. DO NOT SCALE DRAWING

DRAWN PER ASME Y14.5M UNLESS OTHERWISE SPECIFIED ALL DIMENSIONS ARE INCHES AND TOLERANCES TO BE AS FOLLOWS.  
**FABRICATION**      **MACHINE**  
 .XX +/- .06      .XX +/- .03  
 [X +/- 2]      [XXX +/- .005]  
 < +/- 2      [X +/- 1]  
                          [X +/- .1]  
                          < +/- 1

REV	DESCRIPTION	DATE	DWN	CHKD	APVD	ECN
4	ITEM 30 P/N UPDATED	2023-05-12	RVR	JPB	JPB	---
3	REDRAWN	2021-11-11	RVR	JPB	JPB	---

ITEM	QTY	PART NUMBER	DESCRIPTION
40	10	1001-0484	NUT, HEX 5/8-11 ZINC PLATED
39	10	1001-0476	WASHER, FLAT 5/8IN SAE 1-5/16 OD ZINC PLT
38	1	1001-0401	LID, 316SS 250/500
		1000-1176	LID, 316SS 250/500 DUAL 1 IN PORT 150PSI
37	1	1001-0069	CAP, PRESTRAINER 250/500-MACHINED
36	1	1001-0430	PRESTRAINER, ASSY 316SS 250/500-04;
		1001-0433	PRESTRAINER, ASSY 316SS 500-06
35	1	1001-0960	COVER, REVERSER 250/500
34	1	1001-0961	O-RING, EPDM-70 -022
		1000-1188	O-RING, REVERSER COVER VITON;
33	1	1001-0956	CAP, PAWL RETAINER 250-2000 0915
32	1	1001-0752	O-RING, EPDM-70 -018
		1000-1187	O-RING, PAWL RETAINER VITON

DESIGNER TAM	DATE 2016-12-21	TITLE V-500-XX EXPLODED VIEW
CHECKER DOO	DATE 2016-12-21	CLIENT
ENGINEER DOO	DATE 2016-12-21	 VAF Screen Filters 5640 Logistics Dr #100, Alpharetta, GA 30004 Phone: 470-222-2890 Email: solutions@fisbrands.com
MANAGER DOO	DATE 2016-12-21	
SCALE: NONE	PROJECT	PART NUMBER
	DRAWING	SHEET
	V-500-XX EV	1 OF 1
		4