



VAF™ FILTRATION SYSTEMS SEAWATER V-SERIES™ AUTOMATIC FILTERS

GENERAL INFORMATION

Evoqua has developed a filter that is resistant to the corrosive nature of high alkalide sea water. While the standard V-Series™ filters are manufactured in 316L stainless steel, higher grade materials have been selected for the seawater compatible models.

The design of the V-Series filter incorporates the latest self-cleaning screen technology available. The complexity and cleaning efficiency of any self-cleaning screen filter is in the mechanical system that drives the cleaning process. The patented+ V-Series filter's bi-directional drive mechanism is the simplest and most efficient design resulting in:

- fewer moving parts (no limit switches or pistons reversing the cleaning mechanism)
- simpler controls
- lowest flush flow
- greater cleaning efficiency
- lower maintenance requirements

The V-Series filter's 12 to 15 second flush cycle is automatically initiated when a pressure differential across the screen increases to 0.5 bar (7 psi). The filter remains on-line and the filtration process is uninterrupted during the brief cleaning process. The flush discharge is among the lowest available resulting in minimal waste.

Specifications

Materials

- Filter Body: 3" - 20" inlet/outlet
2205 Duplex SS **
- Screens: 904L SS **
- Flanges: AWWA Class D **
- Seals: Nitrile, Viton®, silicone **

Filtration Range

- 10 to 1500 micron

Flow Range

- 7 to 1,364 m³/hr (30 to 6,000 gpm)
per filter *

Maximum Pressure

- 10 bar (150 psi) **

Minimum Pressure

- 2 bar (30 psi) **

Maximum Temperature

- 80° C (176° F) **

Flush Cycle

- 12 to 15 seconds

Flush Valve

- CPVC

Controller

- MicroFlush™ control system - up to
four filters **

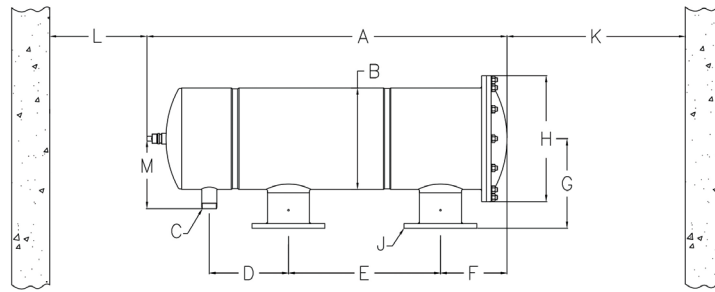
* Varies depending on micron level

** Other options available upon request

+Patented in some countries

V-SERIES™ FILTER DIMENSIONS

- Add -2205 to model number listed below to specify seawater



MODEL	DIMENSIONS (CM)								DIMENSIONS (MM)				DIMENSIONS (CM)			SCREEN AREA CM ²	NOMINAL FLOW (M ³ /HR)			FLUSH FLOW LITERS
	A	B	C	D	E	F	G	H	J	K	L	M	MICRON							
	FLG												100	200	300					
V-250-3	97.6	25.7	3.8	25.4	29.2	22.9	23.5	34.3	80	88.9	30.5	18.2	1445	63	84	92	30			
V-250-4	97.6	25.7	3.8	25.4	29.2	22.9	23.5	34.3	100	88.9	30.5	18.2	1445	63	84	92	30			
V-500-4	123.3	25.7	3.8	25.4	54.6	22.9	23.5	34.3	100	114.3	30.5	18.2	2890	125	168	184	57			
V-500-6	128.4	25.7	3.8	27.9	54.6	25.4	27.8	34.3	150	114.3	30.5	18.2	2890	125	168	184	57			
V-1000-6	164.6	38.6	5.1	40.2	61.0	35.2	34.3	47.8	150	152.4	30.5	26.9	5594	242	325	356	57			
V-1000-8	164.6	38.6	5.1	40.2	61.0	35.2	34.3	47.8	200	152.4	30.5	26.9	5594	242	325	356	57			
V-1500-8	195.1	38.6	5.1	40.2	91.4	35.2	34.3	47.8	200	178.0	30.5	26.9	8387	363	487	534	87			
V-1500-10	195.1	38.6	5.1	40.2	91.4	35.2	34.3	47.8	250	178.0	30.5	26.9	8387	363	487	534	87			
V-2000H-X	208.8	51.7	5.1	45.7	91.4	44.2	43.2	69.9	250 - 300 - 350	178.0	30.5	32.9	10942	474	636	697	87			
V-3500-X	317.5	61.0	7.6	93.3	127.0	55.3	51.1	81.3	350 - 400 - 500	269.3	30.5	41.7	19742	855	1147	1258	167			

MODEL	DIMENSIONS (IN)								DIMENSIONS (MM)				SCREEN AREA IN ²	NOMINAL FLOW (GPM)			FLUSH FLOW GAL
	A	B	C	D	E	F	G	H	J	K	L	M		MICRON			
	FLG												100	200	300		
V-250-3	38.4	10.1	1.5 NPT	10.0	11.5	9.0	9.2	13.5	3	35.0	12.0	7.2	224	276	370	405	8
V-250-4	38.4	10.1	1.5 NPT	10.0	11.5	9.0	9.2	13.5	4	35.0	12.0	7.2	224	276	370	405	8
V-500-4	48.5	10.1	1.5 NPT	10.0	21.5	9.0	9.2	13.5	4	45.0	12.0	7.2	448	551	739	811	15
V-500-6	50.5	10.1	1.5 NPT	11.0	21.5	10.0	11.0	13.5	6	45.0	12.0	7.2	448	551	739	811	15
V-1000-6	64.8	15.2	2 NPT	15.8	24.0	13.9	13.5	18.8	6	60.0	12.0	10.6	867	1066	1431	1569	15
V-1000-8	64.8	15.2	2 NPT	15.8	24.0	13.9	13.5	18.8	8	60.0	12.0	10.6	867	1066	1431	1569	15
V-1500-8	76.8	15.2	2 NPT	15.8	36.0	13.9	13.5	18.8	8	70.0	12.0	10.6	1300	1599	2145	2353	23
V-1500-10	76.8	15.2	2 NPT	15.8	36.0	13.9	13.5	18.8	10	70.0	12.0	10.6	1300	1599	2145	2353	23
V-2000H-X	82.2	20.3	2 NPT	18.0	36.0	17.4	17.0	27.5	10 - 12 - 14	70.0	12.0	12.9	1696	2086	2798	3070	23
V-3500-X	125.0	24.0	3 FLG	36.7	50.0	21.8	20.1	32.0	14 - 16 - 20	106.0	12.0	16.4	3060	3764	5049	5539	44

NOTES:

Nominal flow rates shown are the maximum flow rate for that model with 100, 200, and 300 micron screens for demonstration purposes only. Larger micron ratings result in higher allowable flow rates. Smaller micron ratings result in lower allowable flow rates.

Flush flow volume shown for each model is the volume of water used for that model when the pressure available to the filter is 2.4 bar (35 psi) during a 15 second flush cycle.

